

IDEAL 0135

Large format manual rotary trimmers with professional features.

Safety cutting head

Self sharpening rotary blade

Automatic clamping system

Paper collection tray

solid metal construction Available

Slotted side brackets for oversized formats

max.

0.8

mm

← 135 cm →



Technical specifications

Cutting length 1350 mm

Cutting height max 0.8 mm

Table depth 295 mm

Table height 865 mm

Dimensions 940 x 1540 x 480 mm (H x W x D)

Weight 32 kg

Product characteristics

Slotted side brackets for cutting oversized formats. Suitable for cutting and trimming of blueprints, paper and foils, drawings, plans, photos, posters or similar large format digital printouts. Smooth running safety cutting head with self sharpening rotary blade made from special hardened steel. Counter blade made of stainless knife steel. Automatic clamping system with transparent clamp bar. Practical collection tray for trimmings. Complete with sturdy metal stand. Convenient paper roll holder available as an option (at an extra cost).

IDEAL 0135

Features



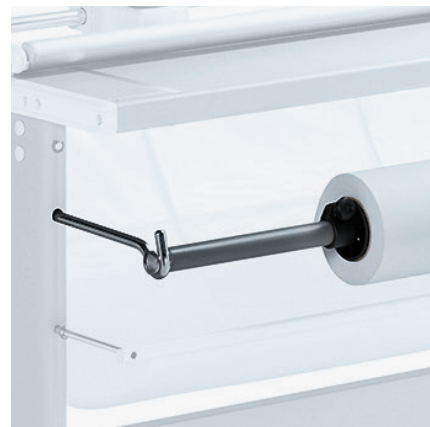
SAFETY CUTTING HEAD

Safety cutting head with self sharpening rotary blade for efficient, precise and safe cutting.



PAPER COLLECTION TRAY

The paper waste is collected conveniently underneath the working table of these rotary trimmer.



PAPER ROLL HOLDER

As an option, the rotary trimmer can be supplied with a convenient paper roll holder at an extra cost.

