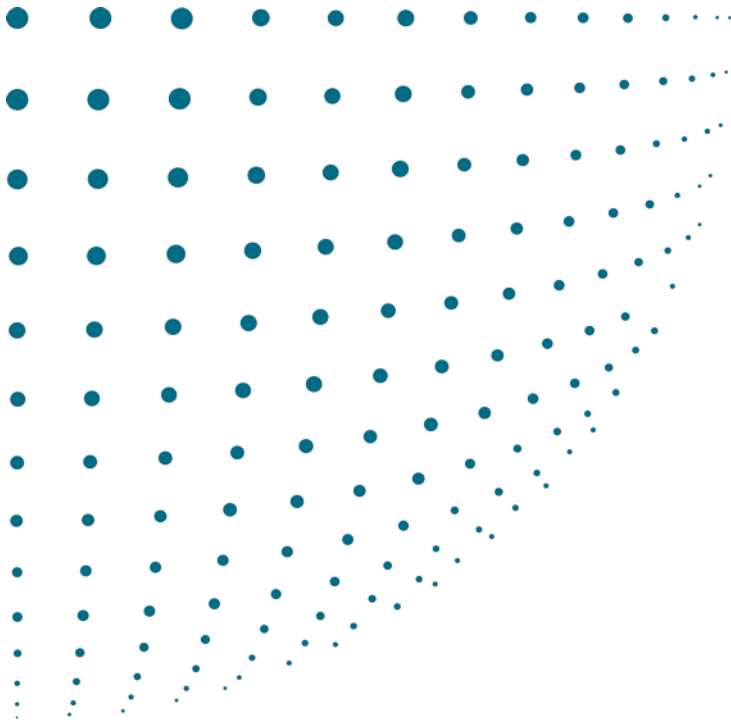


# RICOH

Compact, affordable B/W printer



Aficio™ **SP 300DN**

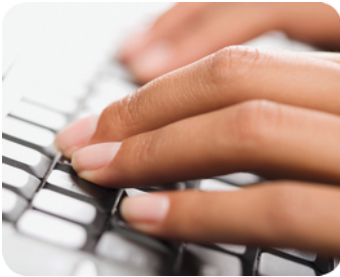
# Fast and functional

Small, smart and speedy, the Aficio™SP 300DN is ideal for any small office. Compact enough to fit unobtrusively on a desk, this B/W A4 laser printer offers everything you need for everyday personal document production. Network-ready as standard, it is easy to operate and simple to maintain. And all this comes at an affordable price.

- Productive: 28 pages per minute.
- Easy operation.
- Standard networking and duplexing.
- Versatile printing.
- Attractive rounded two-tone styling.



# Easy and efficient



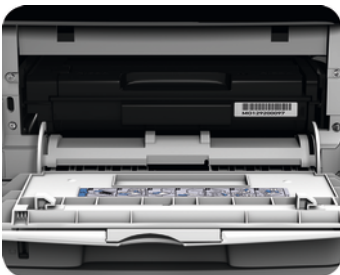
## RICOH'S STRENGTHS

Whether you need a printer, copier, fax, multifunctional device or advanced software for your digital office, Ricoh has the appropriate solution. Our extensive line-up is tailored to save you time and energy, reduce printing cost, increase productivity and deliver impeccable output. And after implementation, we offer comprehensive after-sales support for all our products. Meeting all these needs is our latest B/W laser printer, the Aficio™SP 300DN.



## HIGHLY PRODUCTIVE

- Warm-up: less than 20 seconds.
- First print ready: 8 seconds.
- Continuous print speed: 28 pages per minute.
- Maximum capacity: 550 sheets.
- Duplex printing as standard.



## SIMPLE TO OPERATE

Like all Ricoh products, the SP 300DN is refreshingly easy to use and maintain. The single all-in-one cartridge is easy to replace – with only one hand. Should a paper jam occur, paper is quickly removed from the front of the device. Changing the printer's status is also simple via its Web Image Monitor and Smart Organizing Monitor.



### EASY TO CONNECT

The SP 300DN is perfect for shared use. With standard USB 2.0 and Ethernet 10 base-T/100 base-TX, it fits right into your existing network. You can send each job to the most appropriate network machine. That way, you get the best value from each of your output systems.

### VERSATILE PRINTING

- Wide range of formats such as A4, A5, A6, B5, B6, Letter and Executive.
- Use plain and recycled paper up to 162 g/m<sup>2</sup>.
- Print on envelopes and transparencies.
- Save time by collating your prints automatically.
- Protect confidential documents by using a watermark.



### ENVIRONMENTALLY FRIENDLY

At Ricoh we help you lower the environmental impact of your office as well as lower your cost. The Aficio™SP 300DN has eco-friendly and money-saving features such as short warm-up time, ultra-low sleep mode, increased toner yield, duplex printing, Energy Saver mode, and low Typical Electricity Consumption. In addition, Ricoh products are Energy Star compliant. This means less CO<sub>2</sub> is produced in providing the energy needed to run Ricoh devices.

## GENERAL

|                         |                                                               |
|-------------------------|---------------------------------------------------------------|
| Technology:             | Laser beam scanning & electro-photographic printing           |
| Print speed:            | 28 prints per minute                                          |
| Warm-up time:           | Less than 20 seconds                                          |
| First print speed:      | Less than 8 seconds                                           |
| Dimensions (W x D x H): | 370 x 392 x 262 mm                                            |
| Weight:                 | Less than 12.5 kg                                             |
| Power source:           | 220 - 240 V, 50 - 60 Hz                                       |
| Power consumption:      | Maximum: Less than 880 kW<br>Energy saver mode: Less than 5 W |
| Duty cycle:             | 20,000 pages per month                                        |

## CONTROLLER

|                   |                                          |
|-------------------|------------------------------------------|
| Processor:        | 295 Mhz                                  |
| Printer language: | PCL5, PCL6, PostScript® 3™ emulation     |
| Memory:           | 64 MB                                    |
| Drivers:          | PCL6, PostScript® 3™                     |
| Fonts:            | 80 fonts                                 |
| Resolution:       | 600 x 600 dpi, 1,200 x 600 dpi emulation |

## CONNECTIVITY

|                         |                                                                                 |
|-------------------------|---------------------------------------------------------------------------------|
| Network protocol:       | TCP/IP, IPP                                                                     |
| Supported environments: | Windows® 2000/XP/Vista/7/Server 2003/Server 2008<br>Macintosh OS X 10.2.8 -10.6 |
| Interface:              | USB2.0, 10 base-T/100 base-TX Ethernet                                          |

## PAPER HANDLING

|                        |                                                                                                                                      |
|------------------------|--------------------------------------------------------------------------------------------------------------------------------------|
| Paper input capacity:  | Standard: 1 x 250-sheet paper tray<br>50-sheet bypass tray<br>Maximum: 550 sheets                                                    |
| Paper output capacity: | 125 sheets                                                                                                                           |
| Paper size:            | Paper tray: A6 - A4<br>Bypass tray: A6 - A4<br>Optional tray: A5 - A4                                                                |
| Paper weight:          | Paper tray: 52 - 162 g/m <sup>2</sup><br>Bypass tray: 52 - 162 g/m <sup>2</sup><br>Duplex & optional tray: 60 - 105 g/m <sup>2</sup> |
| Media:                 | Paper trays: Plain paper, recycled paper<br>Bypass tray: Plain paper, recycled paper, envelopes                                      |

## CONSUMABLES

|                                                           |                     |
|-----------------------------------------------------------|---------------------|
| Toner:                                                    | Black: 1,500 sheets |
| The Aficio™SP 300DN ships with a 1,000-sheet starter kit. |                     |

## OPTIONS

|                  |                      |
|------------------|----------------------|
| External option: | 250-sheet paper tray |
|------------------|----------------------|

For availability of models, options and software, please consult your local Ricoh supplier.



ISO9001 certified, ISO14001 certified

All brand and/or product names are trademarks of their respective owners. Specifications and external appearance are subject to change without notice. The colour of the actual product may vary from the colour shown in the brochure. The images in this brochure are not real photographs and slight differences in detail might appear.

Copyright © 2011 Ricoh Europe PLC. All rights reserved. This brochure, its contents and/or layout may not be modified and/or adapted, copied in part or in whole and/or incorporated into other works without the prior written permission of Ricoh Europe PLC.

# RICOH

[www.ricoh-europe.com](http://www.ricoh-europe.com)

For more information, please contact