

you can  
**Canon**

**imageFORMULA  
DR-X10C**

A3 High Speed Production Scanner

High speed scanning  
you can depend on

DR-X10C



**imageFORMULA**



The paper tray can be configured with 3 different height positions according to the volume of paper being scanned.



If your business is serious about scanning, there's an outstanding mid-volume document scanner that delivers high-end performance. Introducing the DR-X10C: bringing you deadline-beating speeds, assured reliability and the highest quality scans time after time.

## Great performance with maximum efficiency

### The ultimate in productivity

Whatever the nature of your scanning requirements, the DR-X10C is designed to process them with maximum efficiency. That means the DR-X10C is an A3 scanner capable of 100 pages per minute\* – whether scanning black & white, greyscale or colour or scanning at 200dpi or 300dpi. These incredible productivity levels are achievable because the bulk of image processing is carried out by a dedicated chip in the device's firmware, and independently of your PC.

### Image Conscious

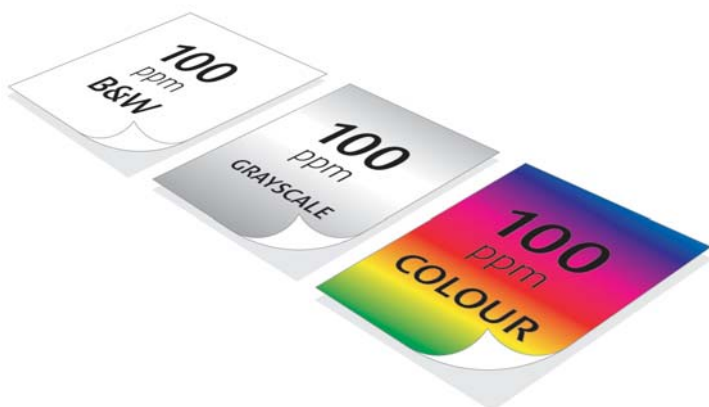
When image quality is paramount, the DR-X10C comes into its own with an optical resolution of 600dpi and numerous built-in image enhancement facilities.

A High Speed Mode allows 300dpi images to be scanned and upgraded into 400dpi and 600dpi images. And to avoid dust accumulation and image deterioration, the DR-X10C uses an automatic blower, wiper, and shading mechanism to keep the sensor clean and the image quality high.

### Renowned Reliability

Operators need to feel comfortable that productivity will be maintained in order for them to focus their time on other things and the DR-X10C delivers in abundance. Providing the highest standards of reliability, the DR-X10C comes equipped with a host of innovative features to ensure optimum feed reliability, outstanding double feed detection and minimal user intervention for the very highest levels of productivity.

### Same speed scanning



**High performance scanning and exceptional image quality.**

Whatever you plan to scan, it's more than likely that no two documents will be the same. The DR-X10C had been designed so that the burden of correctly feeding, handling and processing your documents is effortlessly dealt with by the device and not by you.

## Designed to deliver unbeatable results

### Effortless feeding

The paper tray can be configured with 3 different height positions with manual feed and bypass mode and also offset feeding (lockable side guides). This ensures there's no waiting around for scanning to begin.

### Active Separation Torque Control

Batches of documents are rarely the same, with differences in paper texture, thickness and size, which is why the DRX-10C's feeder has been created to be as nimble as possible. This innovative feature provides the capability to handle a wide range of media by allowing for 5 electronically controlled torque settings. Particular benefits are found when scanning thin fragile documents where you can achieve the necessary separation without the risk of document damage occurring from over aggressive separation. This ensures the best possible levels of document separation and therefore feed reliability.

### Instant size and deskew detection

A dedicated image sensor, located inside the scanner, automatically and instantly detects the size and skew angle of the physical document passing through the scanner, ensuring most accurate reliable results and heightened productivity.

### Ultrasonic double feed detection

Equipped with 3 independently controlled Ultrasonic Sensors, the DR-X10C offers accurate double feed detection and reliability. Additionally the sensors can be setup to trigger either ON or OFF according to a set distance from the leading edge of the scanned page - making scanning documents with sticky notes and/or labels convenient and easy - ensuring maximum productivity.

### Double feed retry

This unique feature automatically reverses the documents in the feeder when a double feed is detected and tries to re-feed them again. Scanning the occasional envelope is simple too - after detection just accept the image by pressing a button on the control panel and scanning automatically continues - boosting overall productivity.

### Staple detection

Canon's innovative staple detection stops feeding instantly whenever a staple is detected so that no damage occurs to the device or document.



The DR-X10C is able to handle a wide range of document sizes in one single batch

**iroha courier**  
Super-fast pickup and delivery  
iroha Courier

**Courier Method: please check one**

- ☐ Priority direct
- ☐ Nonstop, direct delivery. Orders accepted Mon.
- ☐ Rush
- ☒ Delivery in 2 hours or less from time of call
- ☐ Standard
- ☒ Delivery in 4 hours or less from time of call
- ☐ Overnight
- ☐ Pickup between 8:30 a.m. and 1:30 p.m., delivery by 11 a.m.

**Billing Information:**

Charge to ☒ Sender ☐ Receiver ☐ 3rd Party

Payer account number ☐ Billing reference ☐ Cash ☐ Check ☒ Credit Card ☐ OOD

**Charges**

Base charge ☐ Suez/Medit ☐ West Time ☐ Outside metro area? ☐ Misc. ☐

**TOTAL** 12-

**Fig.2**

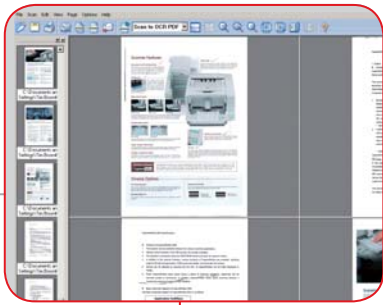
It is highly regarded as the conference theme of the two north and two economic development, comprehensive and balanced development of various levels, for which it serves as a guide and a platform for the development of various levels.

**David Michaels**  
Director  
Nopia Polaris Limited  
16 Red Lion Square  
London, WC1R 4QS  
T: 0845 123 4567  
M: 07900 167 458  
F: 020 7585 7895  
E: david.michaels@nopia.co.uk  
W: www.nopia.co.uk

**nopia**

Company Name **Softv.**  
Address **2013 Ruebl-**  
City, State, Zip  
Contact Name **Geoff Bartynuf**  
Phone No **124-7321**  
Signature

Unbeatable levels of reliability for all your document needs.



CapturePerfect  
software is bundled  
with the DR-X10C





The DR-X10C makes light work of your heaviest workloads. As well as being incredibly simple to operate it comes equipped with a range of powerful image enhancement features, Canon's CapturePerfect software, and a number of accessories: designed to help you deal with every eventuality.

## Added control whenever you need it

### Additional features

For added power and ease of operation, the DR-X10C comes with a suite of additional capabilities. These include auto colour detection, prevent bleed through, moiré reduction, black border removal and punch hole removal. Furthermore, text enhancement features can actually improve the legibility of your scanned documents - for example where characters are affected by deep coloured or patterned backgrounds.

### CapturePerfect

For total control over scanning, from start to finish, the DR-X10C is bundled with CapturePerfect software. It offers a user-friendly interface where multiple jobs or applications can be simply setup with predefined job settings. Daily routine scanning applications can be launched quickly and easy without the need to adjust any device or output settings. Capture Perfect also has many flexible file savings options such as appending to files, saving files as searchable and encrypted PDF and much more. So you gain in every aspect of your work.

### Kofax VRS

When you demand the very best results, deliver them with the DR-X10C and Kofax Virtual Rescan (VRS) Professional. This industry renowned image enhancing technology delivers superb results with even the poorest quality original documents, reducing both document preparation time and manual intervention. The optional Kofax VRS Professional CGA Card incorporates a wealth of automatic features which can improve scanning processes as OCR/ICR, and which ensure rescans are minimised, for optimum efficiency.

### Other optional accessories

- Pre and Post imprinter - prints up to 32 characters - position is electronically controlled
- Patchcode Decoder (Software)
- Barcode Module III (Software)

### Ideal for your business

#### Ideal for Specialist bureau and scanning service providers -

Exceptional reliability whilst running at 100 pages per minute and with a duty cycle of 60,000 scans per day ensures the DR-X10C is the scanner you can always depend on.

#### Ideal for process improvement in demanding offices -

Unbeatable productivity combines with effortless operation to make the DR-X10C the perfect scanner to place at the heart of your business-critical scanning processes, such as invoicing and record retention.

**Everything you need for the most outstanding results.**

# Specifications DR-X10C

Type Document Reading Sensor Optical Resolution Light Source Reading Side Interface  Dimensions  Weight Power Requirements Power Consumption  Operating Environment Environmental Compliance	Desktop Type Sheet Fed Scanner CMOS CIS 3 Line Sensor 600dpi RGB LED Front / Back / Duplex Dual Interface (High Speed USB 2.0 & SCSI-3) Optional Kofax Hardware VRS (CGA) Card Tray closed: 528 (W) x 563 (D) x 375 (H) mm Tray opened: 528 (W) x 861 (D) x 432 (H) mm Approx. 39 kg AC220 - 240V (50/60Hz) Scanning: 125W, Sleep mode:4.5W (AC 220-240V) Power Turned Off:0W 10 – 32.5°C (50 - 90.5°F), Humidity: 20 – 80% RH RoHS and ENERGY STAR			
<b>READING SPEED<sup>1</sup></b>				
Portrait (A4)	B & W / Grayscale	200/300dpi	<b>Simplex</b> 100ppm	<b>Duplex</b> 200ipm
	Colour	200dpi	100ppm	200ipm
	Colour	300dpi	100ppm	170ipm
Landscape (A4)	B & W / Grayscale	200/300dpi	128ppm	256ipm
	Colour	200dpi	128ppm	256ipm
	Colour	300dpi	128ppm	170ipm
<b>DOCUMENT SPECIFICATIONS</b>				
Size	Width	50.8 – 305mm		
	Length	70 – 432mm		
Thickness	Automatic Feeding	52 - 123g/m <sup>2</sup>	(0.06 – 0.15mm)	
	Bypass Mode	40 - 255g/m <sup>2</sup>	(0.05 – 0.30mm)	
Long Document Mode	1000mm max. (Can be set on operation panel)			
	(Thickness less than 0.2mm and image data less than 348MB)			
Paper separation	Retard Roller			
Feeder Capacity	500 sheets (80 g/m <sup>2</sup> )			
	Selectable 500, 300, 100 sheets & MANUAL / BYPASS Feeding Mode			
	Offset Feeding with lockable side guides			
Output Resolution	100 x 100dpi, 150 x 150dpi, 200 x 200dpi, 240 x 240dpi, 300 x 300dpi, 400 x 400dpi, 600 x 600dpi			
Output Mode	B&W / Error Diffusion / Advanced Text Enhancement I & II			
Binary	8bit (256 level) Grayscale			
Grayscale	24bit color			
Colour				

PRODUCT FEATURES	Image Processing	Auto Page Size Detection & Deskew Skip Blank Page Text Orientation Recognition Auto Colour Detection Colour Dropout / Enhancement (R/G/B/Custom) Colour Enhancement (R/G/B/Custom) Advanced Text Enhancement (I & II) Moire Reduction Prevent Bleed Through / Remove Background Batch Separation Punch Hole Removal Scan Area Setting MultiStream
	Device	Auto Power ON/OFF (via USB) Rapid Recovery System Ultrasonic Double Feed Detection (Sensors independently adjustable) Manual / Bypass Feeding Active Separation Torque Control Double Feed Re-Try Mechanism Job / User Registration Buttons Verify Scan / Count Only Mode Buzzer Alarm Selectable Background (White/Black)
BUNDLED SOFTWARE	Capture Perfect 3.0 Options	ISIS / TWAIN Drivers (Windows 2000/XP Pro/ XP Home/Vista)  Pre- Imprinter Post- Imprinter PatchCode Decoder Barcode Module III Kofax VRS Professional CGA Card
	Consumables	Exchange Roller Kit Cleaning Sheets Ink Cartridges
	Daily Duty Cycle	Approx. 60,000 scans / day
	<sup>1</sup> The scanning speed depends on the specification of PC and the setting of functions.  Some images are simulated for clarity of reproduction. All data is based on Canon's standard testing methods. This leaflet and the specifications of the product have been developed prior to the date of product launch. Final specifications are subject to change without notice. ™ and ©: All company and/or product names are trademarks and/or registered trademarks of their respective manufacturers in their markets and/or countries.	



Capture Perfect



Partner Programme



you can  
**Canon**

Canon Electronics Inc.  
www.canon.com

Canon Europa N.V.  
www.canon-europe.com

English Edition XXXXXXXXX  
© Canon Europa N.V., 2008 (1006)